

# Mundhenk's Ministry Messenger

Teaching  
God's Word  
to the People  
of Papua  
New Guinea

December, 2007

Volume XI, No. 4

## Time to Sign!

It's that time of year again! Enclosed you'll find a brand new Prayer Commitment Card. It has always been the case that our financial support is directly proportional to our prayer support. Your prayers will indeed help us get back so please, fill out the card and send the top copy to us. We'll send you our quarterly Prayer Force News letter.

## Rolling a Rock

Raising support is like rolling a large rock uphill. Sometimes the grade is steep and it's slow going. Other times the terrain is almost level and the boulder moves right along. However, at the top of the hill, there is a lip. After that lip the grade is almost downhill; we are at that lip. Once we get down to needing only a few hundred dollars in monthly support, people who have been waiting to start support of this work will jump on board. So, the urgent need is for people and churches

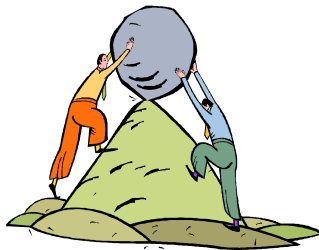
to propel this work over the summit and on to PNG!

Right now we need just \$505 a month to be able to go. That's the equivalent of just 20 individuals or churches at

\$25 a month!

Since monthly support determines when we can leave, our planned departure date is 30 days

after the last of our support is secure (that allows us to get the best rates on airline tickets). God is bringing in the finances, we're just waiting to see whom He will use.



One person can't do it all but "many hands make light work!"

## www.mundhenks.org

Our new website is now online and fully operational. After languishing in development for several weeks, www.mundhenks.org has a new design and is ready to handle information and communication. There are stats, pictures and forums telling you about us, the country and the college. It also will handle address additions and changes and includes new ways to contact us. Go check it out!

## Prayer Briefs:

### Ready to Fly!

Through individuals and churches, God has provided all \$7,000 needed for our plane tickets to PNG. Praise God!

### Can't leave home without 'em!

Visas and work permits can take a notoriously long time to process. Pray that ours will move smoothly through the system and arrive quickly.

### Moving Twice

When we leave the U.S. we will be moving halfway around the world. Once we get to PNG we'll need to move again—halfway across the country. This will be costly. We need about \$3,000 in one time gifts to cover this.

### U.S. Address:

Kent & Michelle Mundhenk  
1510 Sunflower Lane  
Granbury, TX 76048  
home2png@charter.net  
www.mundhenks.org

### Mission Address:

PIONEERS  
10123 William Carey Drive  
Orlando, FL 32832  
(407) 382-6000  
www.pioneers.org